



SAGE 200

EXTENDED PROFILE

The Sage logo, consisting of the word "Sage" in a green, rounded, sans-serif font.

OVERVIEW

Sage 200 is a mid-market ERP from Sage aimed at growing small and medium-sized businesses. It combines financials, commercial (sales and stock) functionality, and reporting/Bi in a modular, cloud-enabled product that you can extend with extra modules and partner services.

CORE FEATURES

- Financial management: general ledger, accounts payable and receivable, bank reconciliation, and VAT/compliance features.
- Commercials/Supply chain: sales order processing, purchasing, inventory, and pricing/discount management across multiple warehouses and companies.
- Reporting and Business Intelligence: dashboards, configurable reports, and alerts that pull live data from the system.
- Collaboration and productivity: integrations with Microsoft 365 (Outlook, Word, Excel) so teams can work from familiar tools.

LICENSING AND PRICING

Pricing for Sage 200 typically depends on three main elements: the product edition or core licence, the number and type of user licences, and any implementation, hosting, or support services provided by Sage or an accredited partner.

Because needs vary by company (modules, users, connected companies, data migration, reporting, and hosting), custom quotations are required



SOFTWARE SPECIFICATION

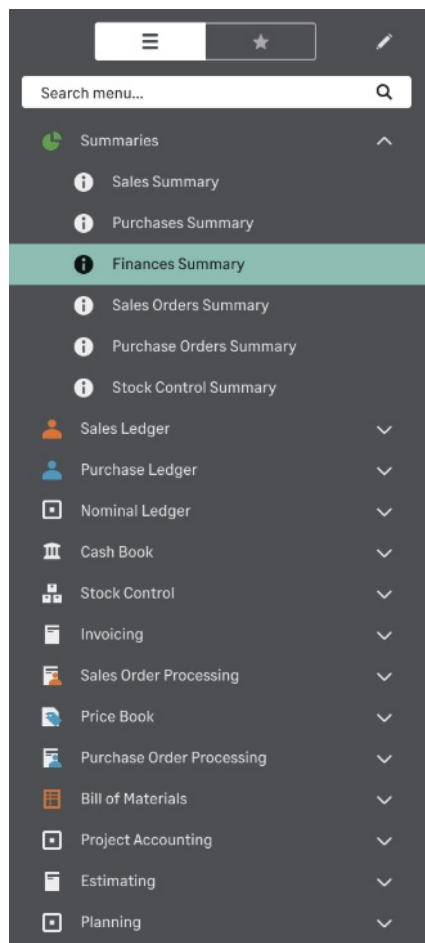
OVERVIEW	
PRODUCT NAME	Sage 200
BUSINESS SECTORS	
DISTRIBUTION	✓
GOVERNMENT & NPO	✗
MANUFACTURING	✓
RETAIL	✗
SERVICES	✓
INDUSTRY	
AEROSPACE & DEFENSE	✗
AUTOMOTIVE	✗
CHEMICAL	✗
CONSTRUCTION	✓
COSMETICS	✗
ELECTRONICS	✗
ENERGY/POWER/UTILITIES	✗
ENGINEERING	✗
FASHION	✗
FINANCIAL SERVICES	✓

FOOD & BEVERAGE	✗
LOCAL GOVERNMENT	✗
MEDIA	✗
MEDICAL & HEALTHCARE	✓
METALWORKING	✗
OILFIELD	✗
PACKAGING	✗
PAINT & ADHESIVES	✗
PHARMACEUTICAL	✗
PLASTICS & RUBBER	✗
PRINT & DESIGN	✗
RENTAL	✗
TELECOMMUNICATIONS	✗
WOODWORKING	✗
CANNABIS	✗
EDUCATION	✗
NONPROFIT	✓
ERP SOFTWARE FEATURES	
BILLING	✓
BUSINESS INTELLIGENCE/ANALYTICS	✓
COSTING	✗
CRM	✓
CUSTOMER SERVICE	✗
PRODUCT DESIGN	✗
FINANCIALS & ACCOUNTING	✓

HR	✗
INVENTORY MANAGEMENT	✓
ORDER MANAGEMENT	✓
PLANNING & SCHEDULING	✗
PROJECT MANAGEMENT	✓
PURCHASING	✓
QUALITY CONTROL	✗
SALES	✓
SHIPPING & DISTRIBUTION	✗
SUPPLY CHAIN MANAGEMENT	✗
WAREHOUSE MANAGEMENT	✗
ASSET MANAGEMENT	✗
DOCUMENT MANAGEMENT	✗
CUSTOMER SUITABILITY	
ENTERPRISE (1000+ EMPLOYEES)	✗
MEDIUM SIZE (251-1000 EMPLOYEES)	✓
SMALL BUSINESS (1-250 EMPLOYEES)	✓
ADDITIONAL PRODUCT INFO	
MULTI LANGUAGE	✗
MULTI CURRENCY	✗
CUSTOMIZABLE	✓
SYSTEM HOSTING	
CLOUD	✓
INSTALLED ON PREMISE	✓
FURTHER INFORMATION	

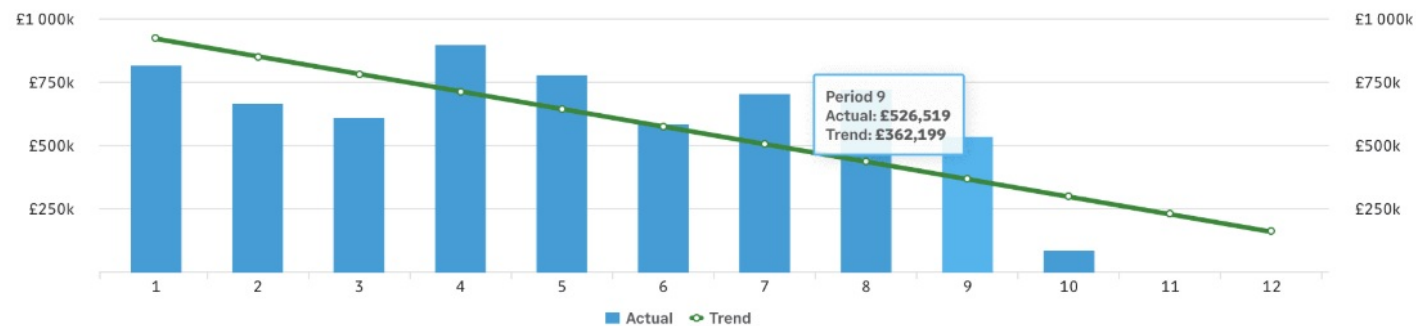


SOFTWARE SCREENSHOTS

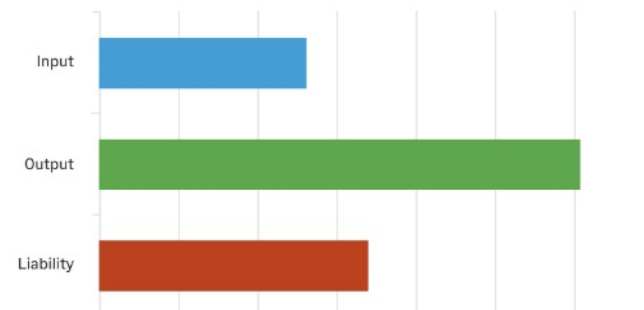


Workspaces Reports

Profit by Period



VAT - Year To Date








Creditor/Debtor Totals Last 12 Periods



Type	Item	Description	Quantity	Warehouse	Unit price	VAT rate	Tax
Standard	[B08ARD0022] Whiteboard - Drywipe	Whiteboard - Drywipe	5,000	1	22.00	1	1

Net (£)
125.00
VAT (£)
25.00
Gross (£)
150.00

Clear
Save

-  Purchase Ledger
-  Nominal Ledger
-  Cash Book
-  Stock Control
-  Invoicing

